



# Cisco Packet Tracer Workbench Lab Access

Document Version: **2020-11-05**

Copyright © 2020 Network Development Group, Inc.  
[www.netdevgroup.com](http://www.netdevgroup.com)

NETLAB+ is a registered trademark of Network Development Group, Inc.

Microsoft® and Windows® are registered trademarks of Microsoft Corporation in the United States and other countries.

Cisco, IOS, Cisco IOS, Networking Academy, CCNA, and CCNP are registered trademarks of Cisco Systems, Inc.

## Contents

|   |    |
|---|----|
| Introduction .....                        | 3  |
| Objectives .....                          | 3  |
| Lab Topology .....                        | 3  |
| Lab Settings .....                        | 3  |
| 1 Use the Packet Tracer Workbench .....   | 4  |
| 1.1 Run the Packet Tracer Workbench ..... | 4  |
| 1.2 Closing Up and Finishing.....         | 16 |
| 1.3 Logging In Again .....                | 17 |

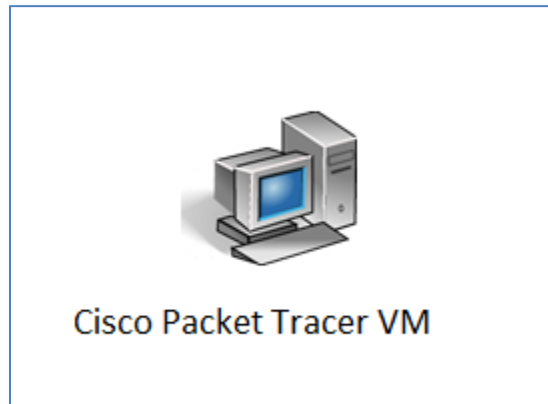
## Introduction

Cisco Packet Tracer is an excellent tool for building the skill sets needed for programming and configuring Cisco routers, switches, and access points. Using NDG's remote access solution, students can access and use Packet Tracer remotely, eliminating the need for students to install Packet Tracer on their individual computers.

## Objectives

In this lab, we will be performing the following task: Access Packet Tracer from within NETLAB+

## Lab Topology



## Lab Settings

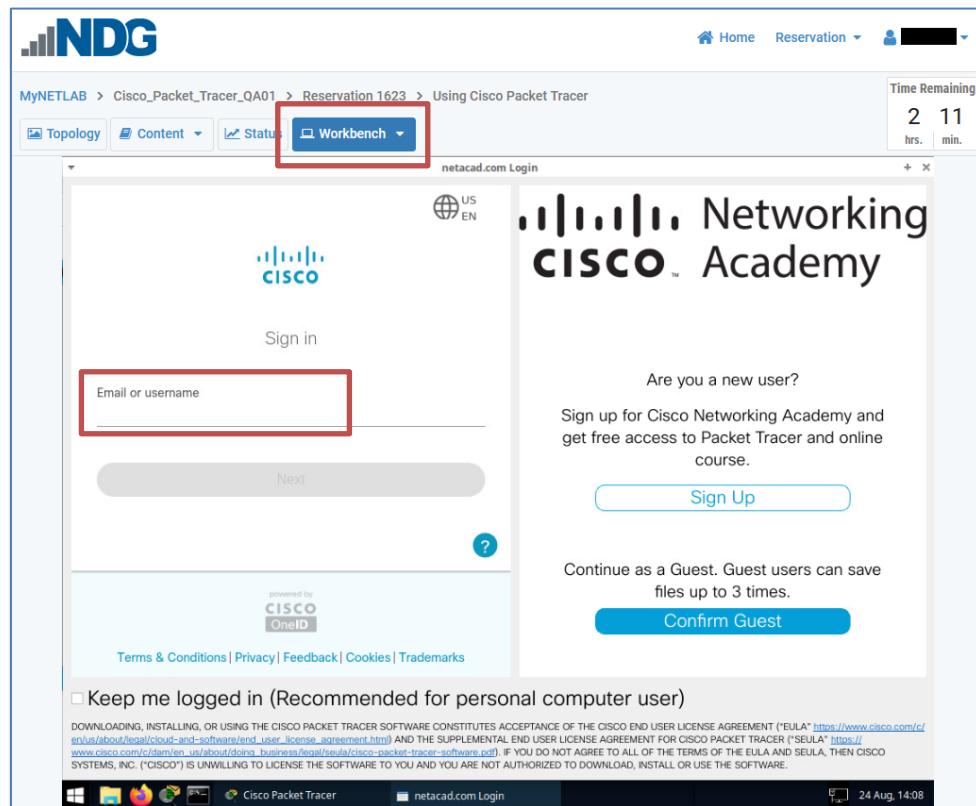
The settings for each device (router, switch, computer, and access point) are listed in the Packet Tracer assignment and will differ for each lab assignment.

## 1 Use the Packet Tracer Workbench

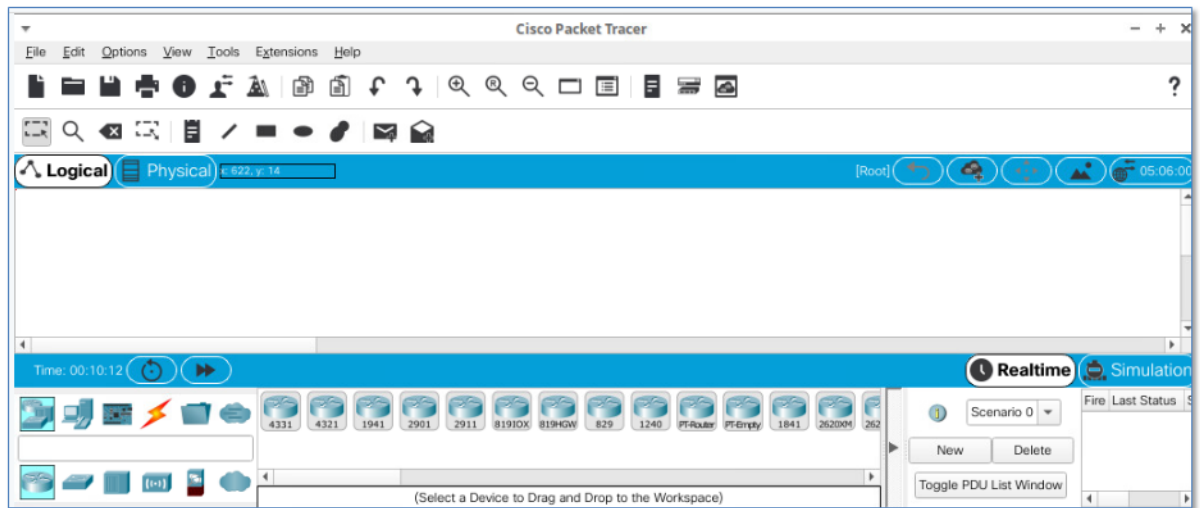
In the sections below, we will demonstrate how to run Packet Tracer Workbench and the tasks required to close and complete the lab session.

### 1.1 Run the Packet Tracer Workbench

1. After you have entered the lab, click on the **Workbench** tab.
  - a. The *Cisco Networking Academy Packet Tracer* login screen will be presented. You can sign in using your Cisco Networking Academy credentials and immediately enter a blank Packet Tracer workbench.



- b. You can now begin to build out your infrastructure.

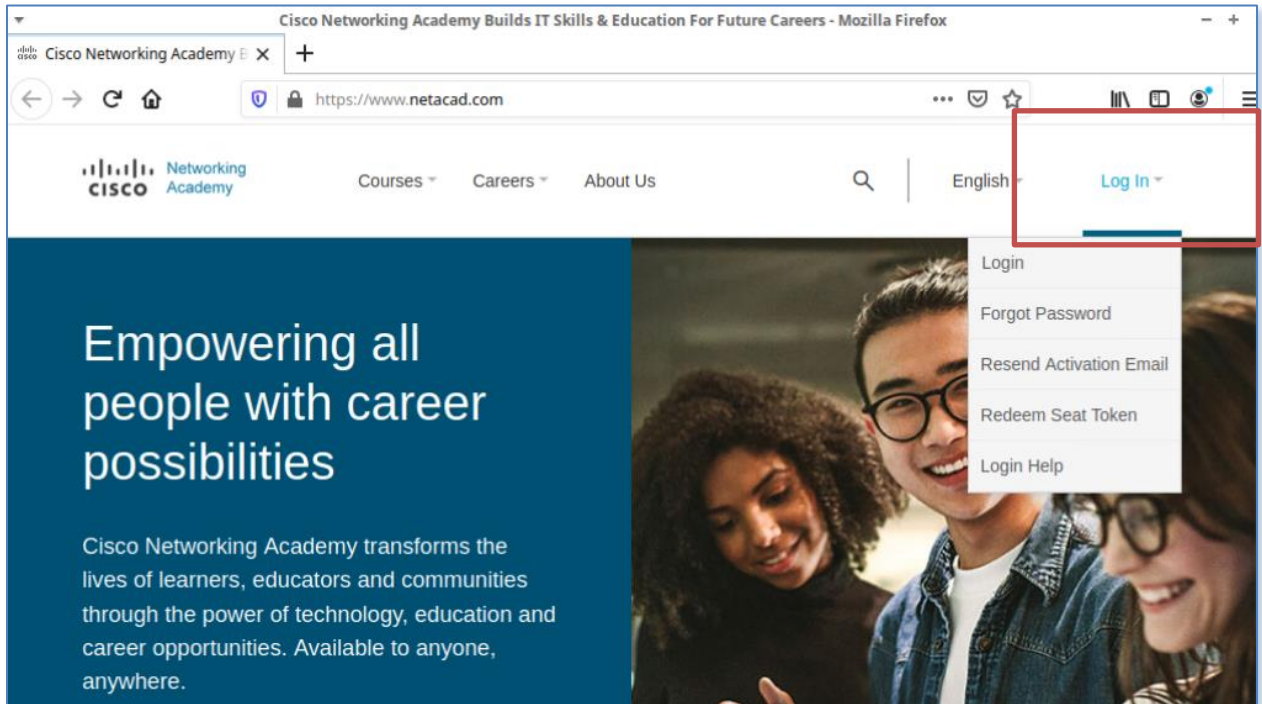


- c. If you do not want to start using Packet Tracer immediately, you can close the Netacad login page by clicking the “X” in the upper-right corner of the window.



During the login, the Cisco Networking Academy site will also be loaded into Firefox. From there, you can login to the Academy and work on the Packet Tracer labs from the curriculum modules as well as do the Skills Based Assessment at the end of the course.

2. Click on **Log In** to log in to your Networking Academy account.



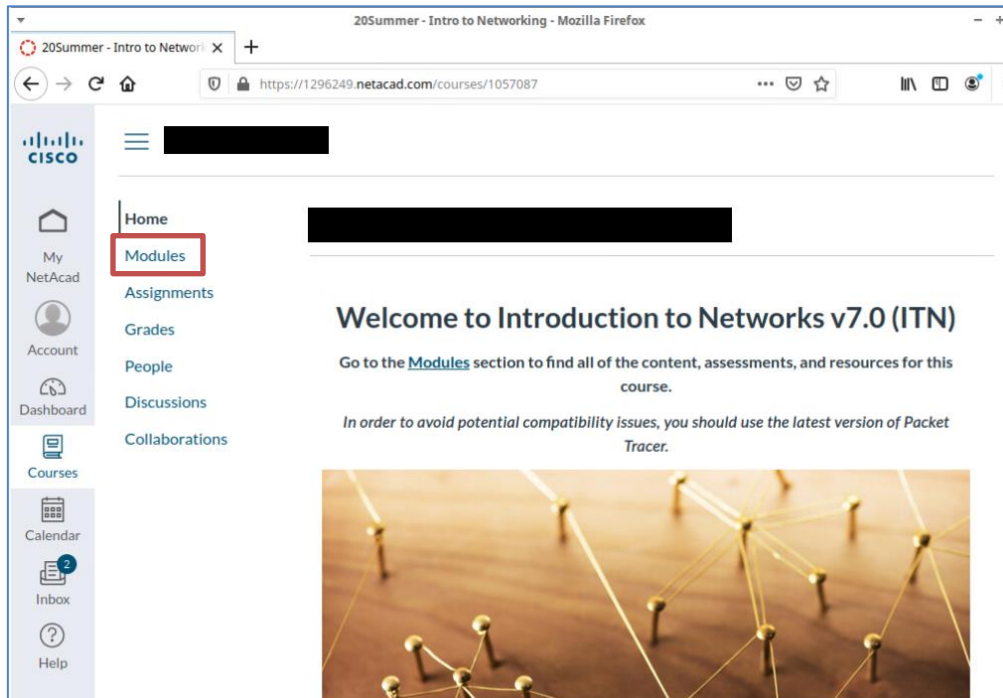
3. Enter your academy **Email or username**, press **Next**, and then enter your **password** and press **Sign In**.



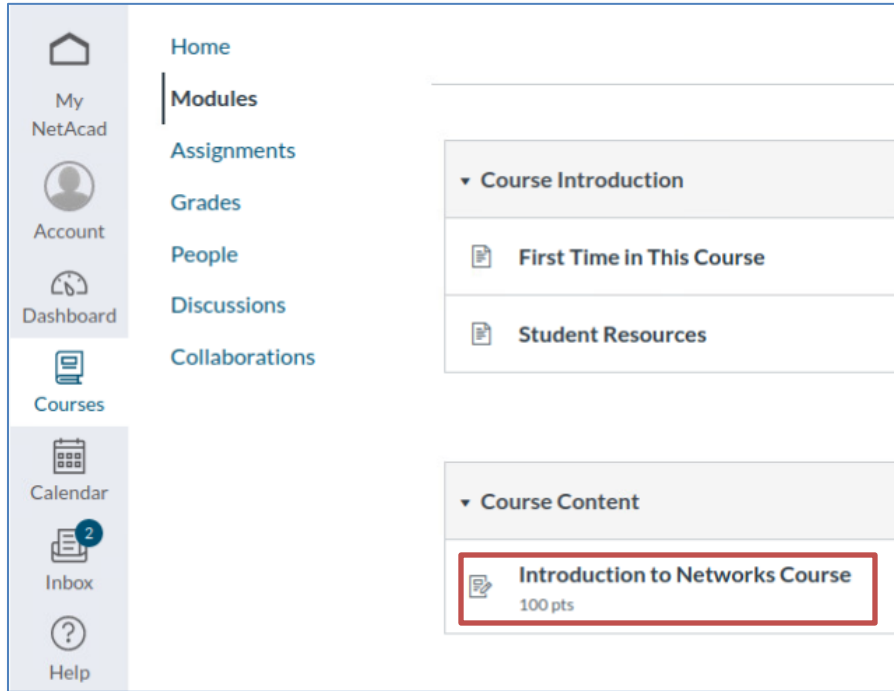
4. Select your course from the list by clicking the **Launch Course** button.



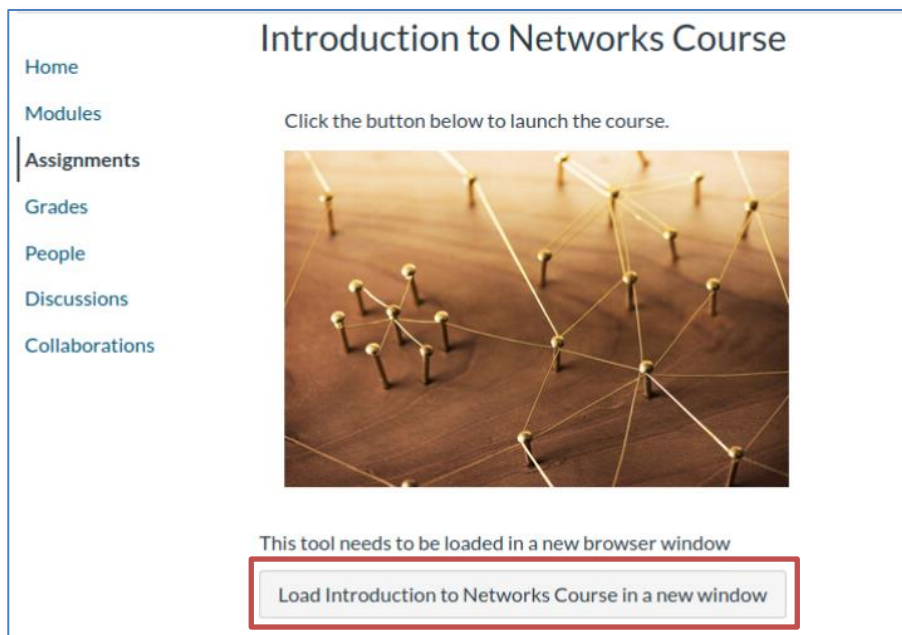
5. On the course *Home* page, click on **Modules**.



6. Under the *Course Content* selection, click on the course name.

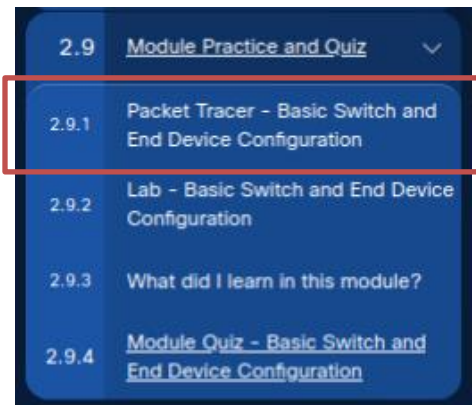
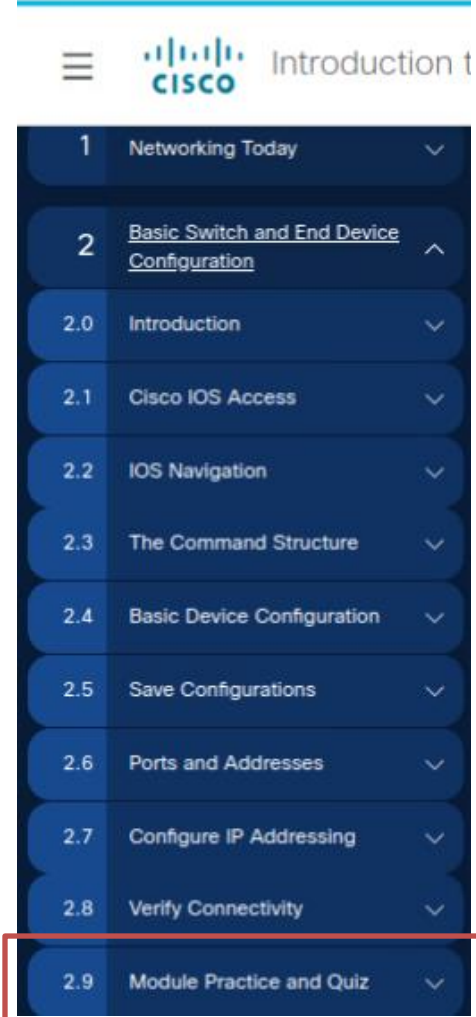
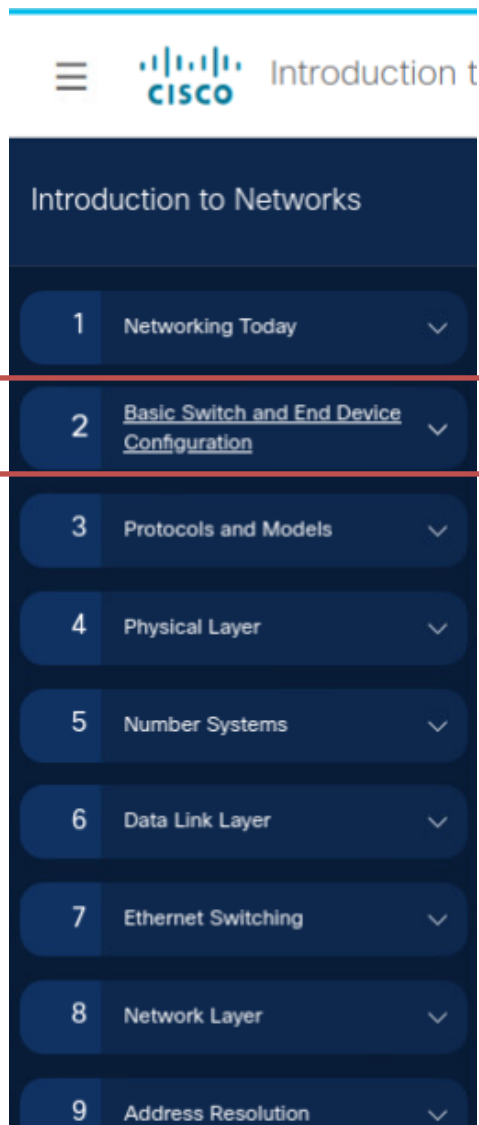


7. On the course page, click on the **Load Course in a new window** button.

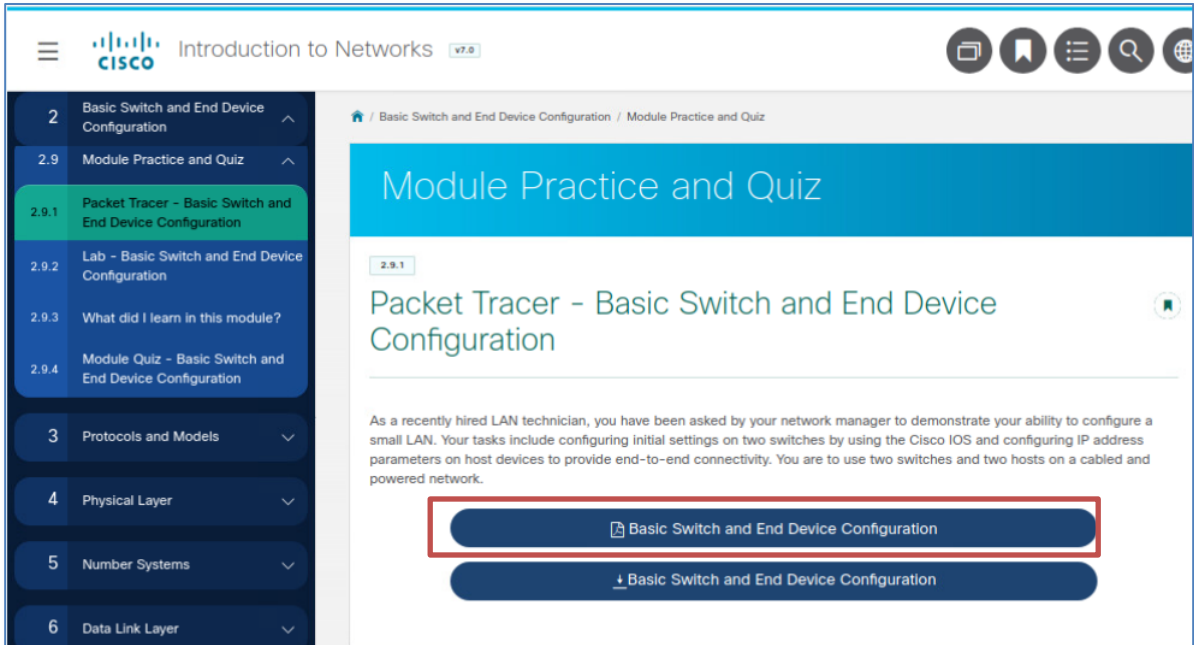




- Under the course content panel on the left side of the page, open a chapter and scroll to the bottom of the chapter list, and find **Module Practice and Quiz**. Click to open the section and then click on the **Packet Tracer lab**.

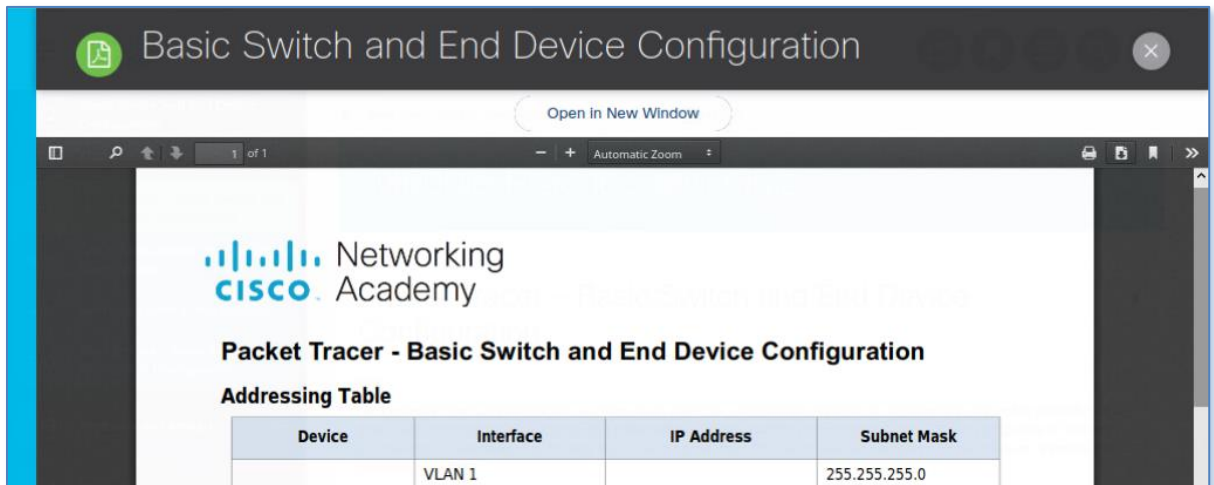


9. In the content frame on the right, click on the top selection (which is the lab name with a **PDF icon** to the left). These are the instructions for the Packet Tracer lab.



The screenshot shows the Cisco Academy interface. On the left is a navigation menu with sections 2 through 6. Section 2.9.1, 'Packet Tracer - Basic Switch and End Device Configuration', is highlighted. The main content area shows the title 'Module Practice and Quiz' and 'Packet Tracer - Basic Switch and End Device Configuration'. Below the title is a paragraph of text and two buttons. The top button, labeled 'Basic Switch and End Device Configuration', has a PDF icon and is highlighted with a red box. The bottom button is labeled 'Basic Switch and End Device Configuration' with a downward arrow.

10. This will open the PDF in Firefox.



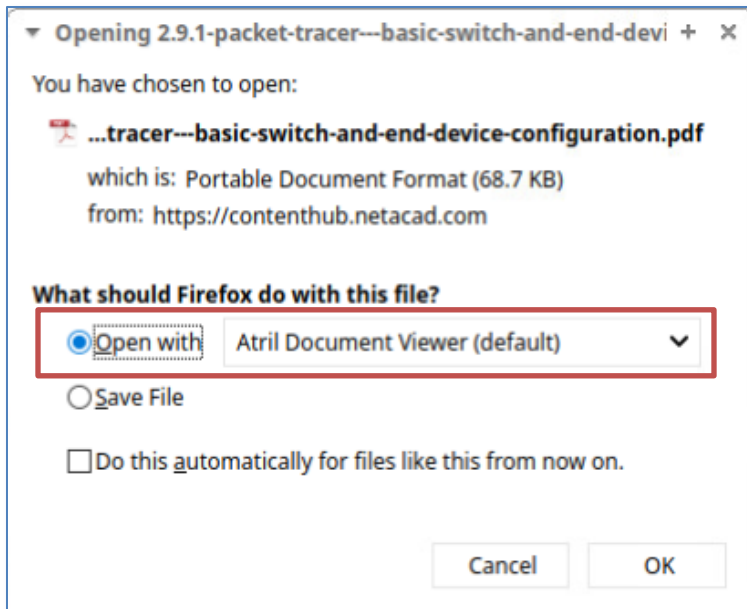
The screenshot shows a PDF viewer window titled 'Basic Switch and End Device Configuration'. The PDF content includes the Cisco Academy logo and the title 'Packet Tracer - Basic Switch and End Device Configuration'. Below the title is an 'Addressing Table' with the following content:

| Device | Interface | IP Address | Subnet Mask   |
|--------|-----------|------------|---------------|
|        | VLAN 1    |            | 255.255.255.0 |

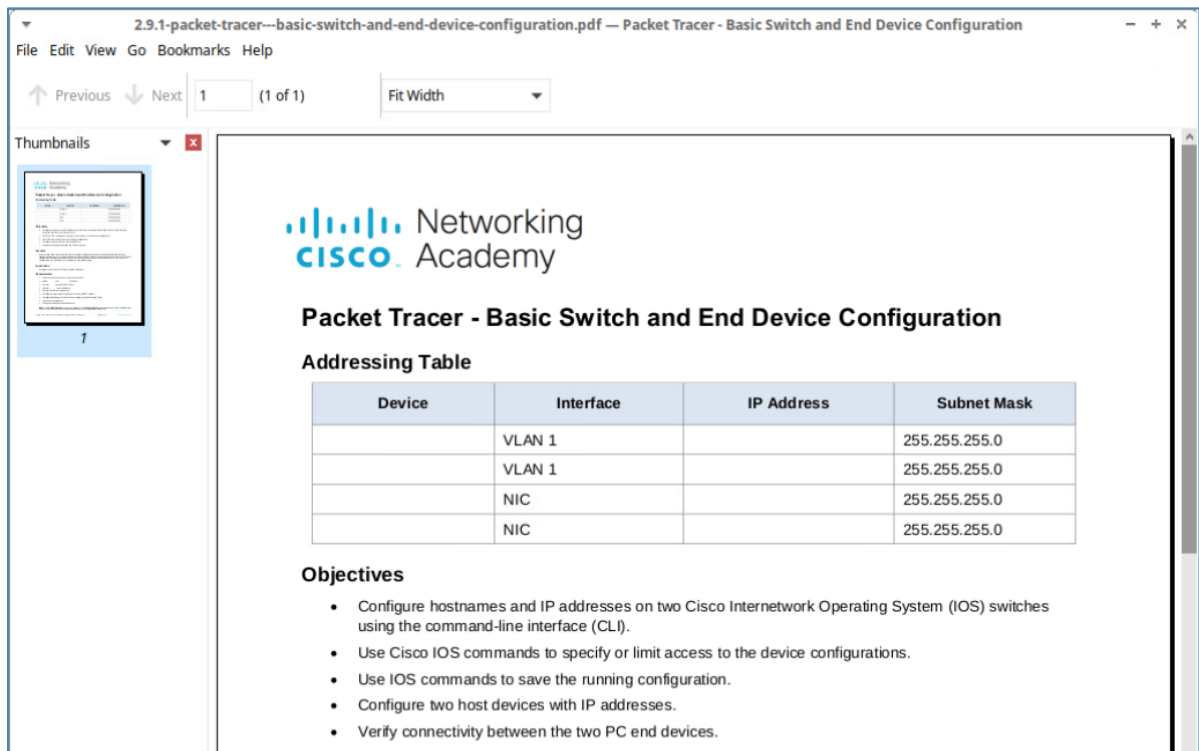
11. It is much easier to flip between the Packet Tracer lab and the instructions if you open the PDF in a reader.  
 12. Click on the **Download** icon in the upper-right corner of the reader window.



13. In the dialog window that opens, click on the **Open with Atril Document Viewer** radio button, then click **OK**.

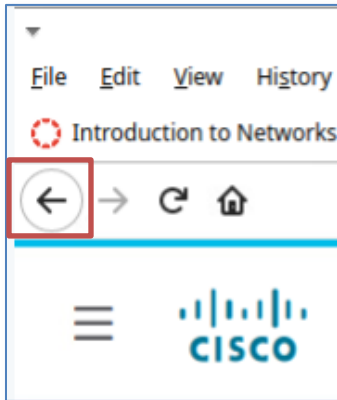


14. The lab instructions should now be open in a PDF viewer.

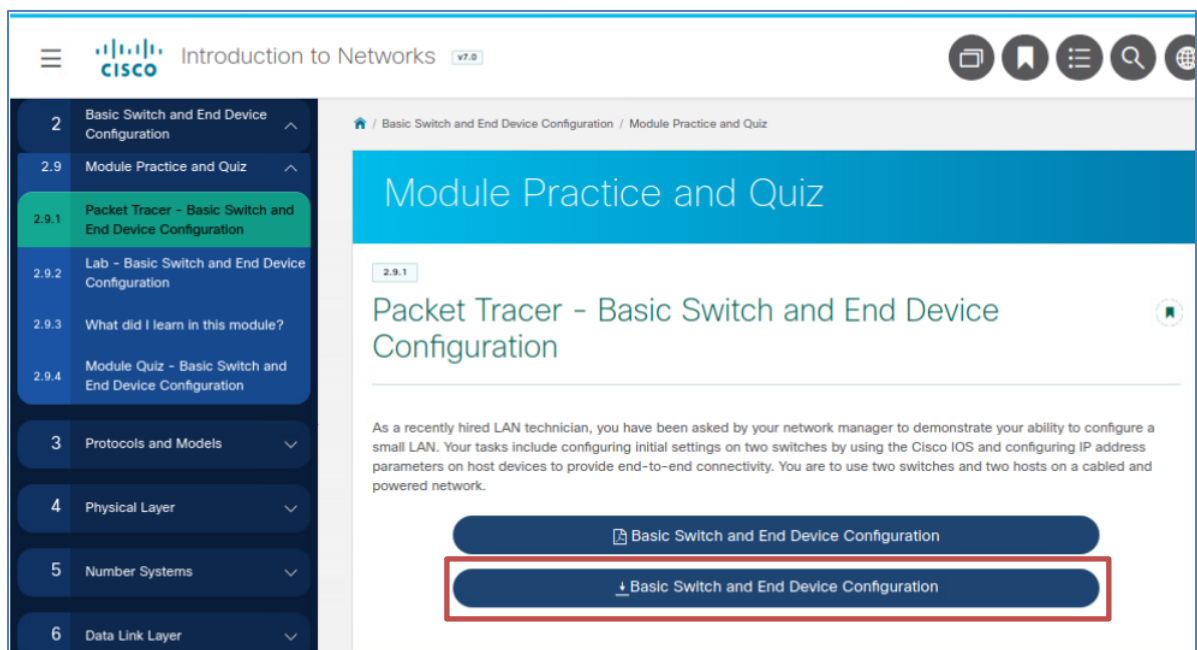


15. Minimize the PDF viewer (the – sign in the upper-right corner of the window)

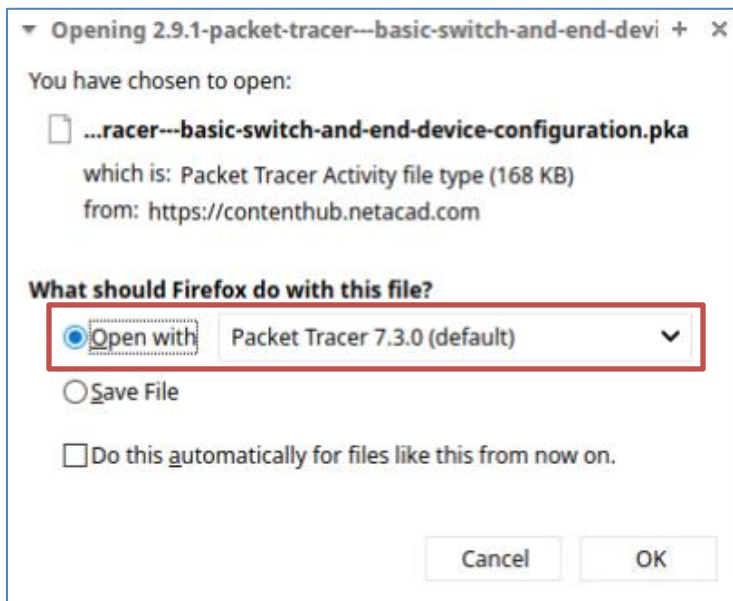
16. Click the ← arrow in the upper-left corner of the browser (you may need to click twice) to go back to the course content page.



17. Repeat Step 9 from above to open the *Module Practice and Quiz* page.
18. In the content frame on the right, click on the bottom selection (which is the lab name with a **Download** icon to the left). This is the Packet Tracer activity.



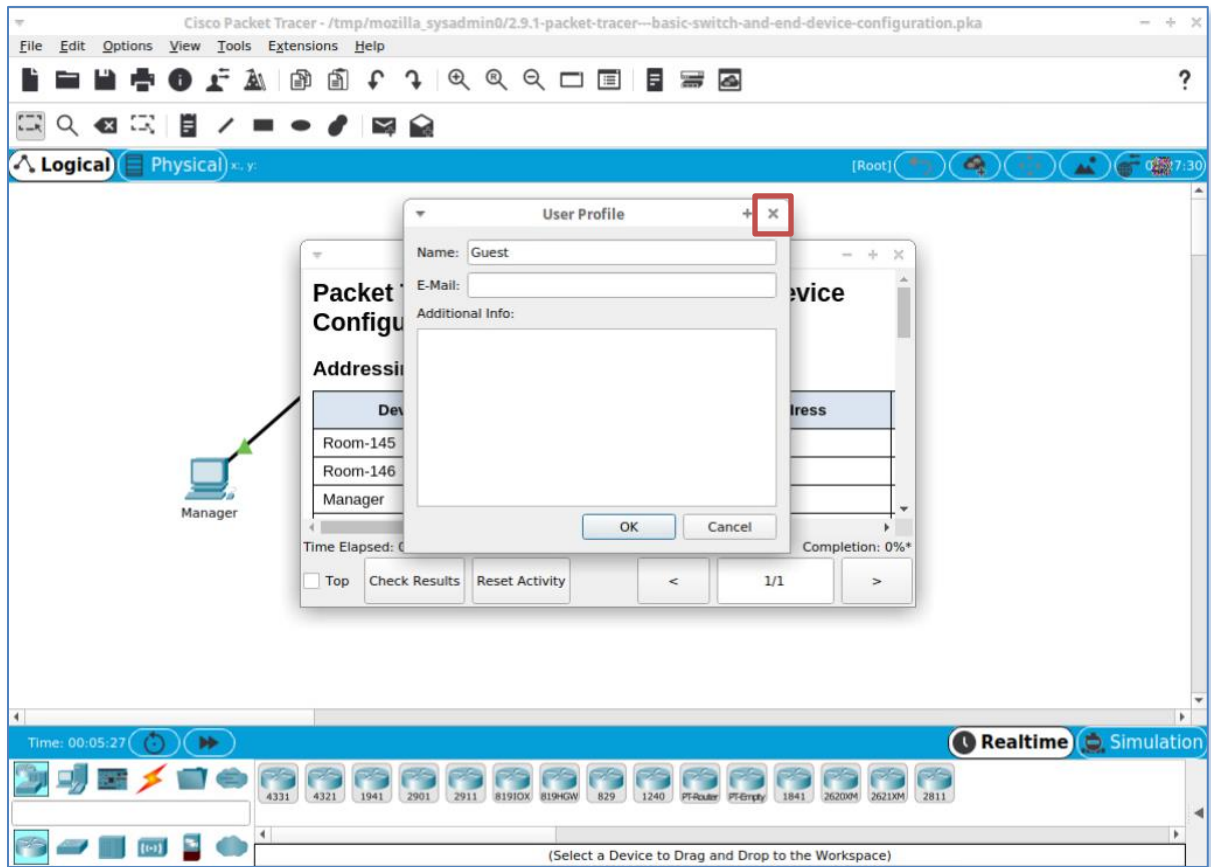
19. In the dialog window that opens, click on the **Open with Packet Tracer 7.3.0** radio button, then click **OK**.



20. Packet Tracer requires that you sign in again using your Cisco Network Academy credentials. Enter your **username** and press **Next ...** and then enter your **password** and press **Sign In**.



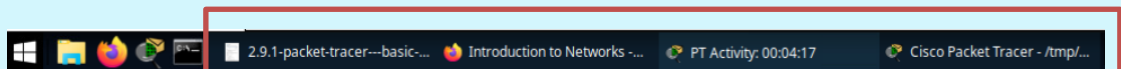
21. Packet Tracer will now be launched with the activity already loaded.



22. Close the User Profile window by clicking the X in the upper-right corner of the window.



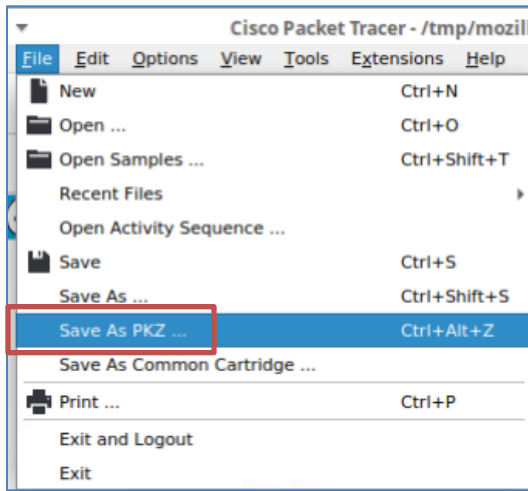
You can flip between the Packet Tracer workbench and the activity description by clicking on the items in the taskbar



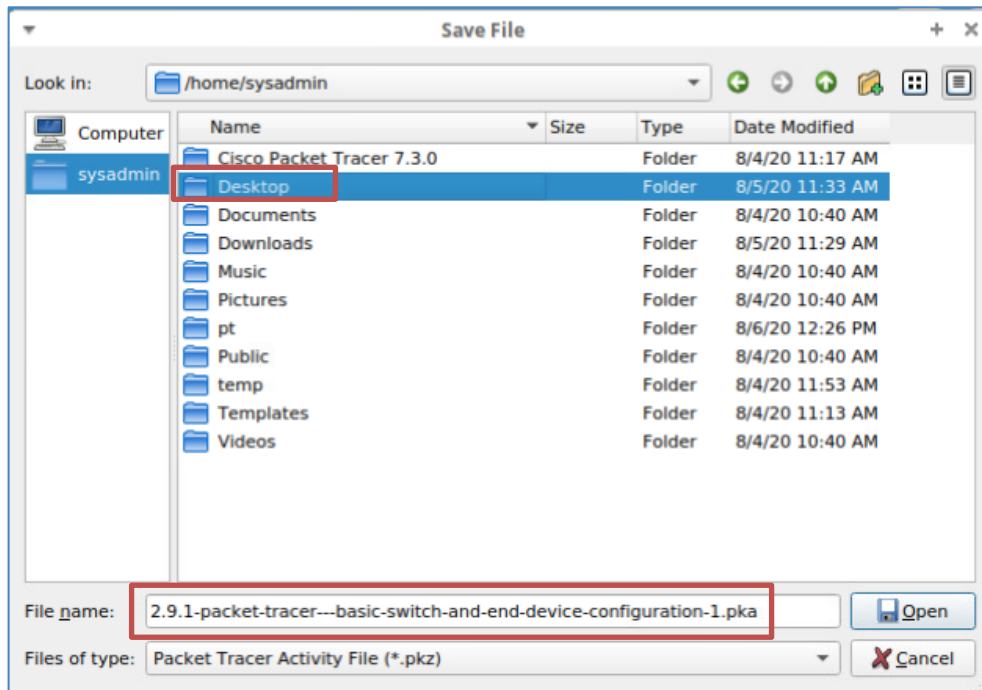
23. Follow the activity as written in the Activity instructions.

24. As you work on the lab, you should click on **Check Results** in the activity description window to see how you are doing.

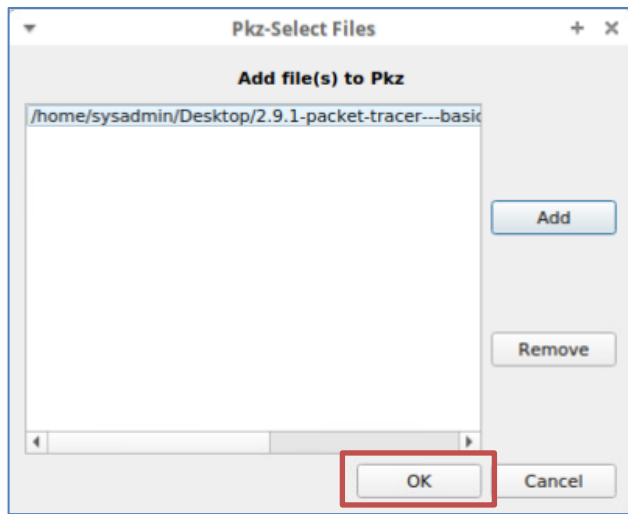
25. When you are satisfied with the lab, you can save your Packet Tracer lab activity by clicking on **File** → **Save as PKZ**.



- Click on the **sysadmin** folder on the left side of the file manager window.
- Double-click on the **Desktop** folder.
- Click the **Save** button.
- Make sure the file name is listed at the bottom of the window and click **OK**.



26. Make sure the file is listed in the **Pkz-Select Files** window and click on **OK**.



27. You can then use the PKZ file to review your lab activity, and you can upload it to the Assignment section for the course (if your instructor is grading the activities).

## 1.2 Closing Up and Finishing

Perform the following steps once you have completed your lab activity.

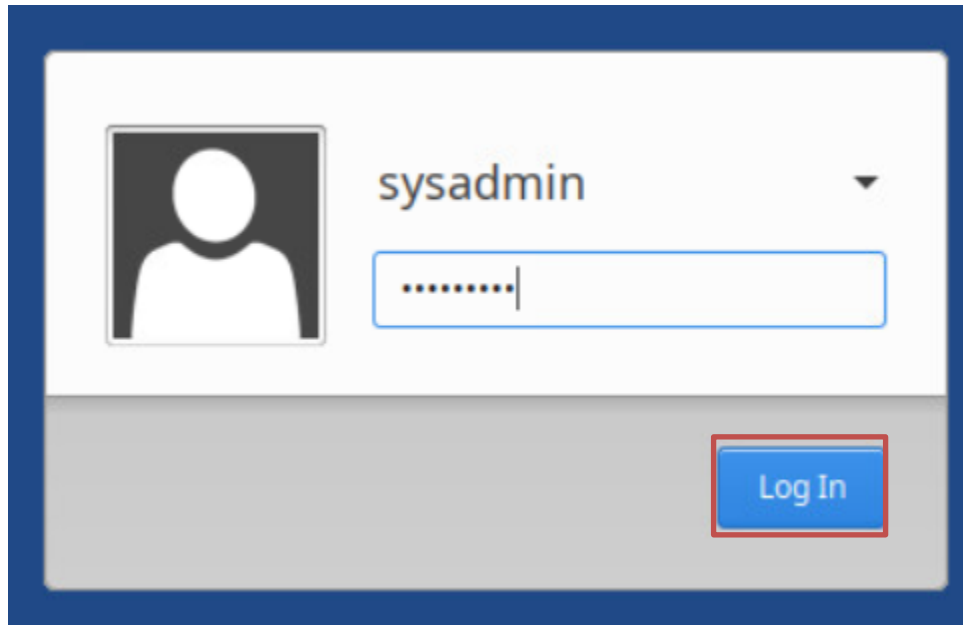
1. Close the Packet Tracer window (since you have already saved the activity to a PKZ file, you do not have to save your work).
2. Close the PDF viewer.
3. You can then go on to another Packet Tracer lab in the course modules (start on Step 9 above), or you can log out of the Cisco Networking Academy and close the browser window.
4. You may now end your reservation.



### 1.3 Logging In Again

After closing Packet Tracer and logging out of Workbench, you can log back in again, if desired, rather than having to end the reservation and schedule a new reservation.

1. Log in as **sysadmin** using the password **Train1ng\$**.
  - a. At the *Windows 7* login screen, make sure the **sysadmin** user account is displayed. Enter **Train1ng\$** for the password.
  - b. Click **Log In** or press **ENTER** once the password has been typed in.



2. On the desktop, find the **Firefox Web Browser** shortcut and double-click to start. The Cisco Network Academy site should open automatically.

